

How to login to different accounts (IOS/Safari)

Powered by [guidde](#)

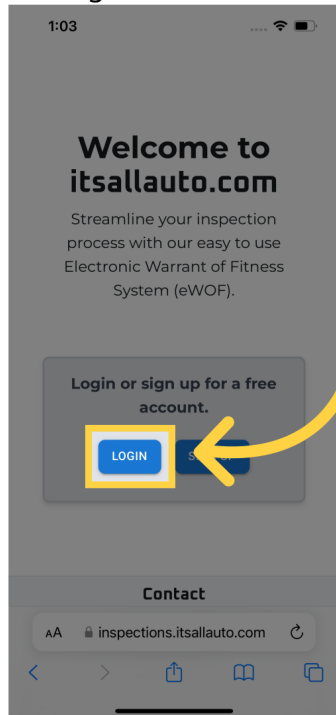
How to login to different accounts (IOS/Safari)



This guide will walk you through on how to log in to the Itsallauto eWOF system on different accounts. We will also go over how to fix the issue with Google not letting you choose what account to log in with on an IOS/Safari device.

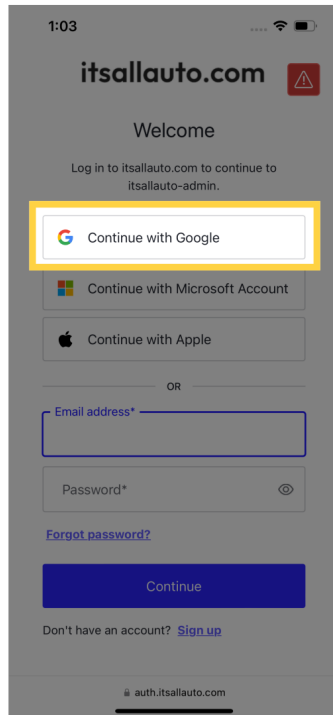
01 Click the "login" button

On inspections.itsallauto.com , click the login button



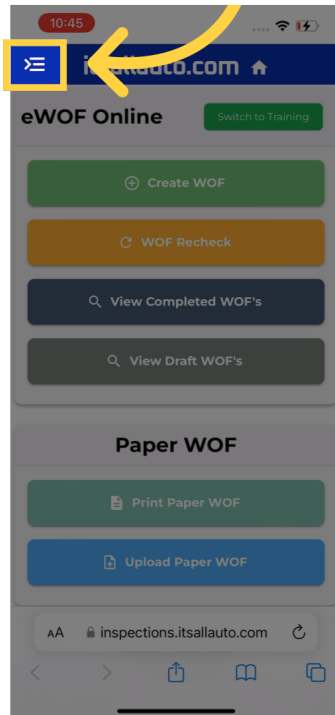
02 Choose log in method

Choose your log in method and then follow the prompts for logging in. Which log in method you select should be based on what method you used to sign up. In this example, we will choose Google.



03 Confirm you've signed in to the right account

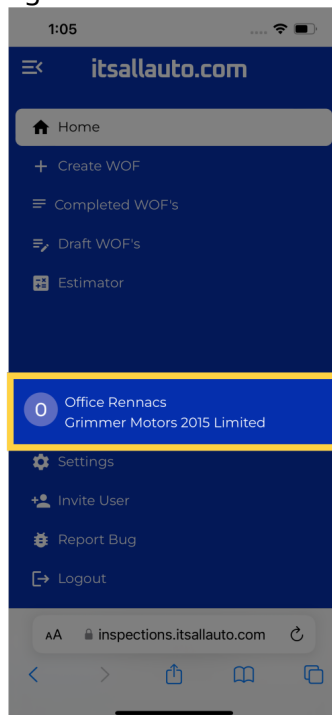
After following the prompts for logging in, you should reach the home screen. Confirm that you have signed in to the right account by pressing the "expand sidebar" button in the top left.



04 Confirm you've signed in to the right account

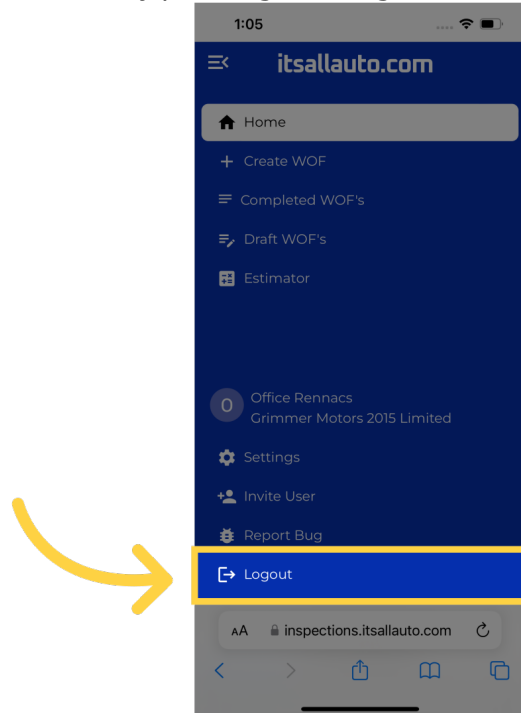
If the details seem correct, then congratulations, you have successfully logged in.

If you have signed in using Google, and did not get the option to select a different account to log in with. This is because Google will automatically sign you in if your google account is the only one on the device. We will walk you through on how to fix this issue.



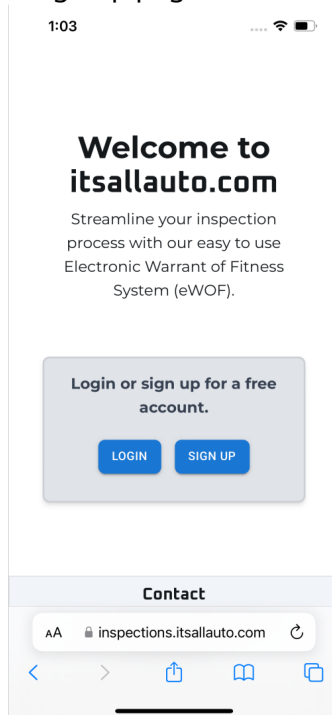
05 Press "Logout" button

First, sign out of your account by pressing the "Logout" button.



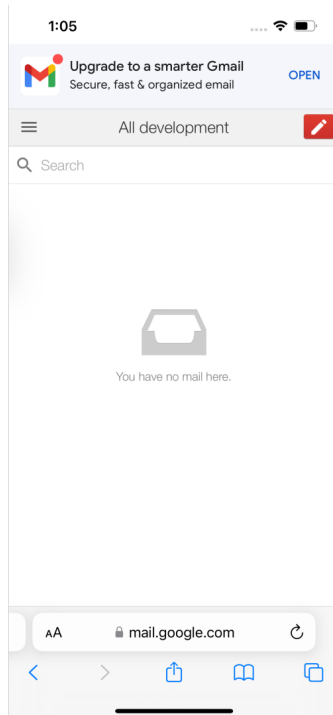
06 Go to: mail.google.com

You should now be on the login slash sign up page. Create a new tab and go to mail.google.com .



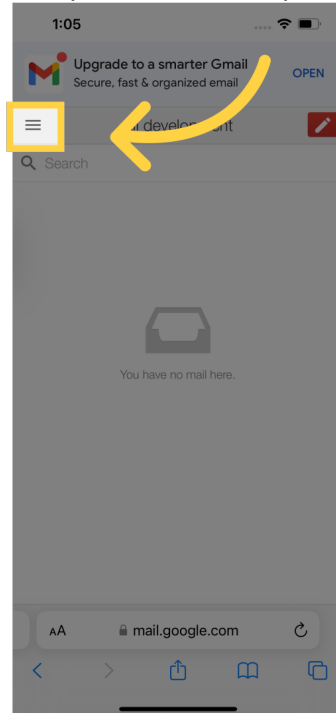
07 You should now be on mail.google.com

You should now be on a screen that shows the inbox of the Google account you're currently signed in to.



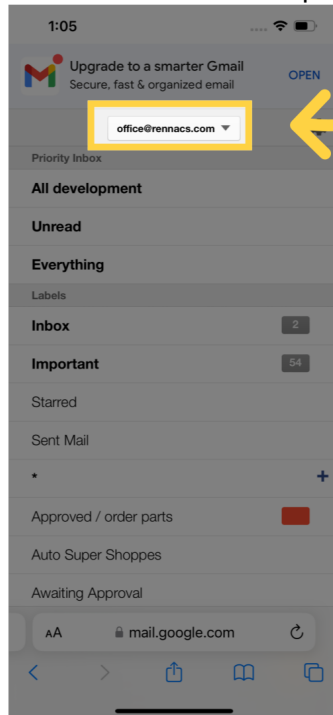
08 Open "more options" menu

Press the "3 line" icon in the top left to open the "more options" menu.



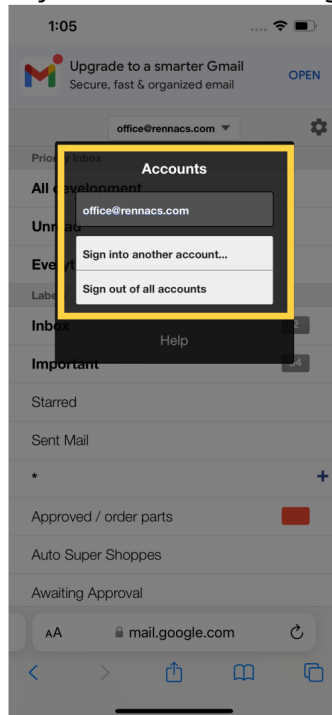
09 Open the email dropdown

Then open the email dropdown that should be near the top center of your screen.



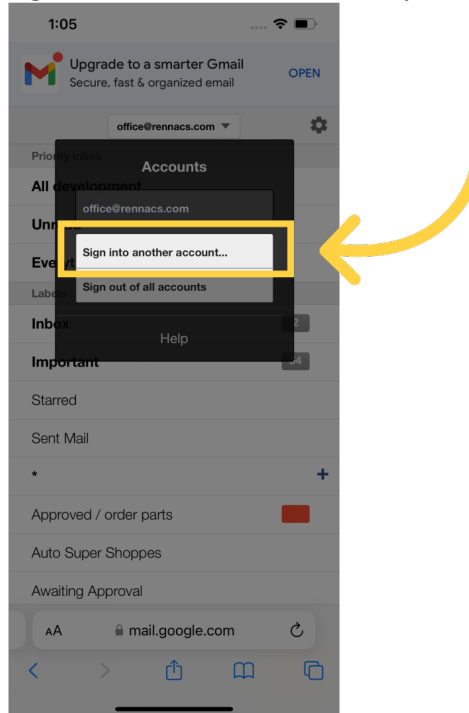
10 Select "Sign into another account..." option

This should show a menu of the signed in accounts, and options to add and remove accounts. As you can see from our example, we only have one account logged in the Safari browser.



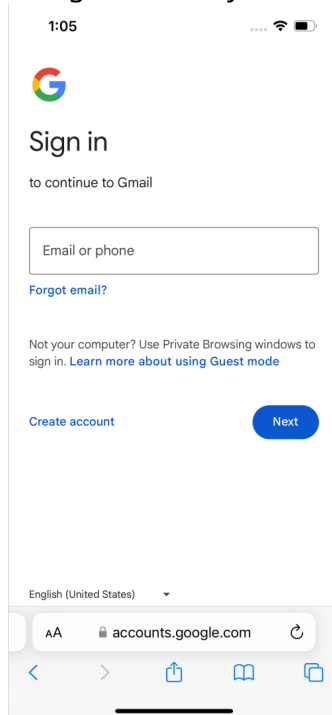
11 Select "Sign into another account..." option

To add another account, press the "Sign into another account..." option.



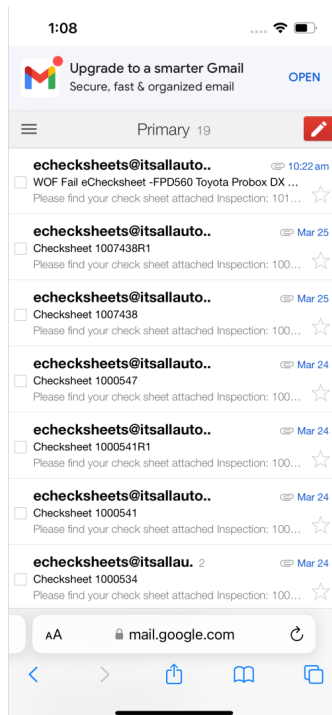
12 Follow log in prompts

Follow the prompts to sign in to the Google account you want to use.



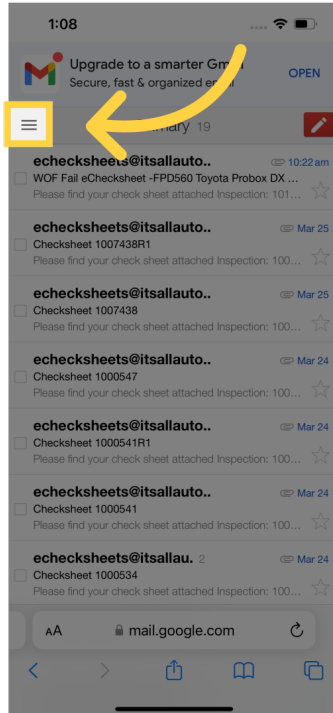
13 Should now be on inbox page

After following the prompts to log in, you should now be on a screen showing the inbox of the Google account you just signed in as.



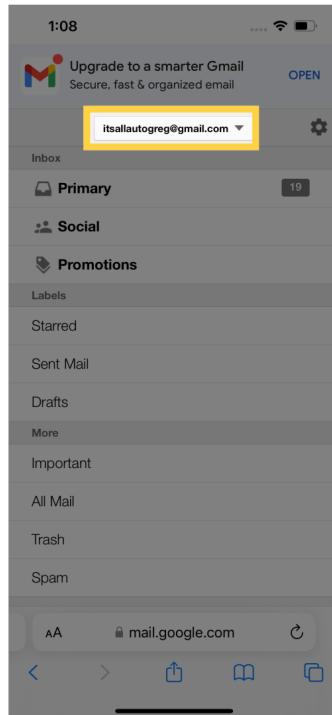
14 Check if there are multiple accounts

Check that there are now multiple accounts on this device. Press the "more options" icon.



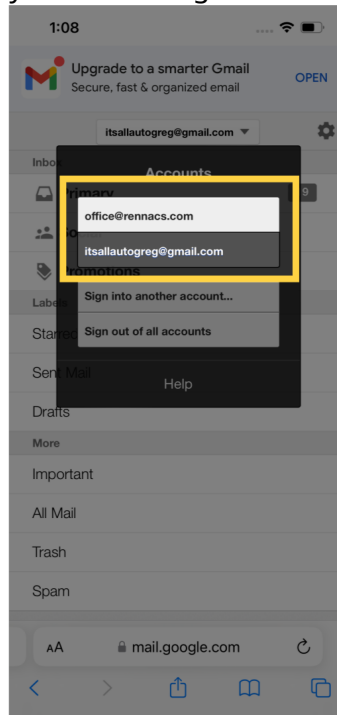
15 Open the email dropdown

Open the email dropdown



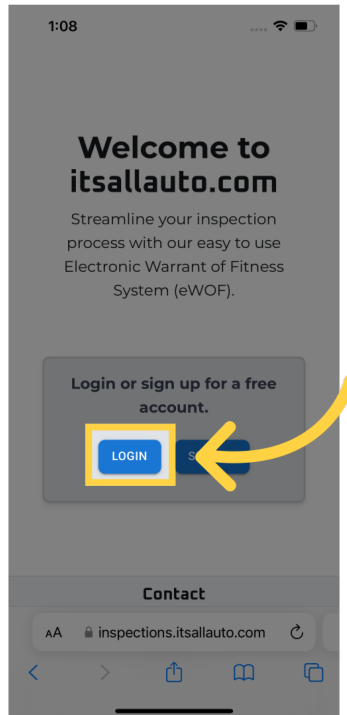
16 Check that there are multiple accounts, and go back to inspections.itsallauto.com

From this menu, you should now see multiple accounts. You can go back to inspections.itsallauto.com and choose the account you want to sign in as.



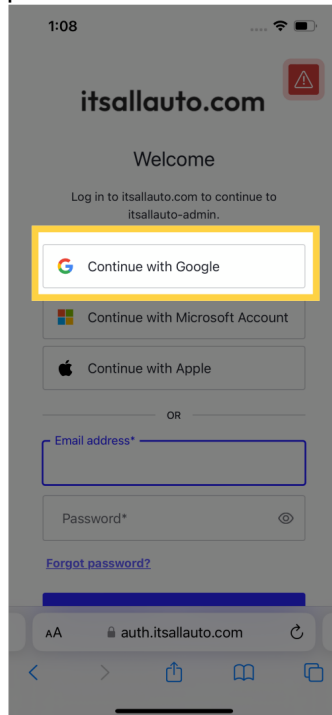
17 Press the "log in" button

Press the log in button.



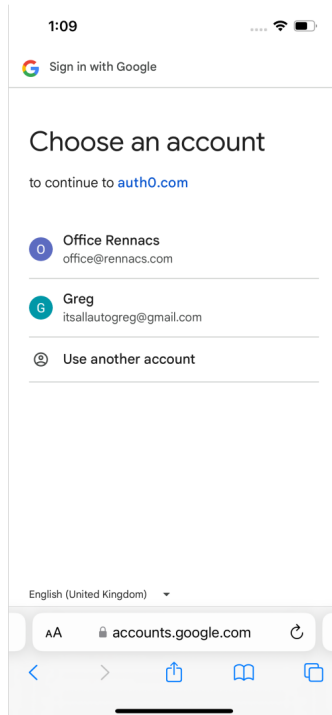
18 Select "Continue with Google"

Select the "Continue with Google" option



19 Multiple accounts should pop up

And now you should have multiple accounts to choose from, with the option to use another one.



20 Tech Support

Thank you for watching. If you wish to contact us you can email us at admin@itsallauto.com , or phone 07 595 0032

If you know someone who could benefit from our FREE online Warrant of Fitness system, then please let them know about itsallauto.com.

- itsallauto.com
- admin@itsallauto.com
- 07 595 0032 (tech support)

guidde.